

Juneau, Alaska's capital city, is supported by state, federal and local government employment, along with other industries such as tourism, fishing and mining. Sitting along Gastineau Channel in Southeast Alaska's spectacular Inside Passage, Juneau is about 900 air miles north of Seattle and 600 air miles south of Anchorage.



Photo Credit: Michael Penn/Juneau Empire



Note: Juneau and regional populations, average annual employment and wages, total business sales, median household income, and volume of visitor traffic are all up from previous years' figures.

Juneau by the Numbers

JUNEAU POPULATION 2009	30,661	↑
MEDIAN AGE 2008	38.2	↑
SOUTHEAST ALASKA REGIONAL POPULATION 2009	69,338	↑
AVERAGE ANNUAL WAGES IN JUNEAU 2008	\$41,650	↑
AVERAGE ANNUAL EMPLOYMENT IN JUNEAU 2008	18,127	↑
TOP EMPLOYER: STATE OF ALASKA	4,211	↓
UNEMPLOYMENT RATE: AVERAGE ANNUAL 2009	6.2%	↑
AVERAGE PRICE OF A SINGLE FAMILY JUNEAU HOME 2009	\$308,000	↑
TOTAL JUNEAU BUSINESS SALES 2008	\$2.004 BILLION	↑
TOTAL JUNEAU RETAIL SALES 2008	\$369 MILLION	↑
MEDIAN HOUSEHOLD INCOME 2008	\$76,597	↑
TOURISTS VISITING JUNEAU 2008	1.1 MILLION	↑
AGE 25+ WITH BACHELOR'S DEGREE OR HIGHER	36%	
NUMBER OF K-12 STUDENTS 2008	4,930	↓

The Juneau Economy

Juneau's economy is driven largely by the key industries of government, tourism, mining, and seafood.

With more than 7,000 employees, the most important source of Juneau jobs and income continues to be **government**, especially State government, which accounts for nearly a quarter of all direct local employment. City, tribal and federal government combined employ another 17 percent of Juneau's workers. Government workers from all four sectors earned **\$366 million** in 2008, or nearly half of all Juneau wages. Within **state** government, the Department of Transportation and Public Facilities is the largest employer with around 700 employees. The Juneau School District is the largest **City** employer, with over 700 employees. The Coast Guard, with 350 employees, is the largest local **federal** employer. Juneau's historic dependence on State government has been declining from two decades ago when State jobs accounted for a third of all local employment.

Tourism, as a whole, is Juneau's largest private-sector employer. According to the McDowell Group, in 2008 the local tourism industry employed 2,230 workers with a

payroll of **\$75 million**. Combined, cruise passengers and crew spent \$177 million in Juneau last year. The number of cruise ship visitors to Juneau

doubled between 1997 and 2007 and now tops one million annually (1,032,000 in 2008). Juneau also plays host to approximately 100,000 independent tourists annually. While the number of tourists visiting Juneau has been on a long, steady upward trend, approximately 140,000 fewer cruise passengers (3.5 fewer ships) are expected in 2010. The economy and the State cruise ship head tax have been cited as the reasons for this decline.

Mining industry payroll in Juneau is approximately **\$39 million**. With more than 300 employees, Juneau's largest private employer is the Hecla Mining Company, whose Greens Creek Mine on Admiralty Island is the largest silver producer in the U.S. and the sixth largest silver producer in the world. A second mine, Coeur Alaska's Kensington Gold Mine, is being developed. When it opens in 2010, the mine will provide



200 direct jobs with an annual payroll of \$14 million. The **Seafood** industry—commercial fishing, fish processing and hatchery production—constitutes another important sector of

the local economy. Juneau's commercial fishing fleet harvests a wide variety of seafood: salmon, halibut, black cod, rockfish, shrimp, crab, herring and groundfish. Nearly 700 Juneau residents fish commercially—as crew or fishermen—earning **\$21 million** in 2007. The processing sector includes several smokeries and buyers of fresh fish. In 2007, 29 million pounds of seafood were processed in Juneau.

Health and social service providers, the **construction** industry, and **Alaska Native organizations** also play vital roles in shaping and supporting the local economy.

In 2009 the populations of both Juneau and of Southeast Alaska increased, albeit slightly. Despite some losses, Juneau avoided the more significant effects of the national recession. A full analysis of 2009 employment and earnings has not yet been compiled.

ENERGY COSTS	
General Residential	\$.08 per kWh
Large Commercial	\$.05 per kWh

Cost of Living

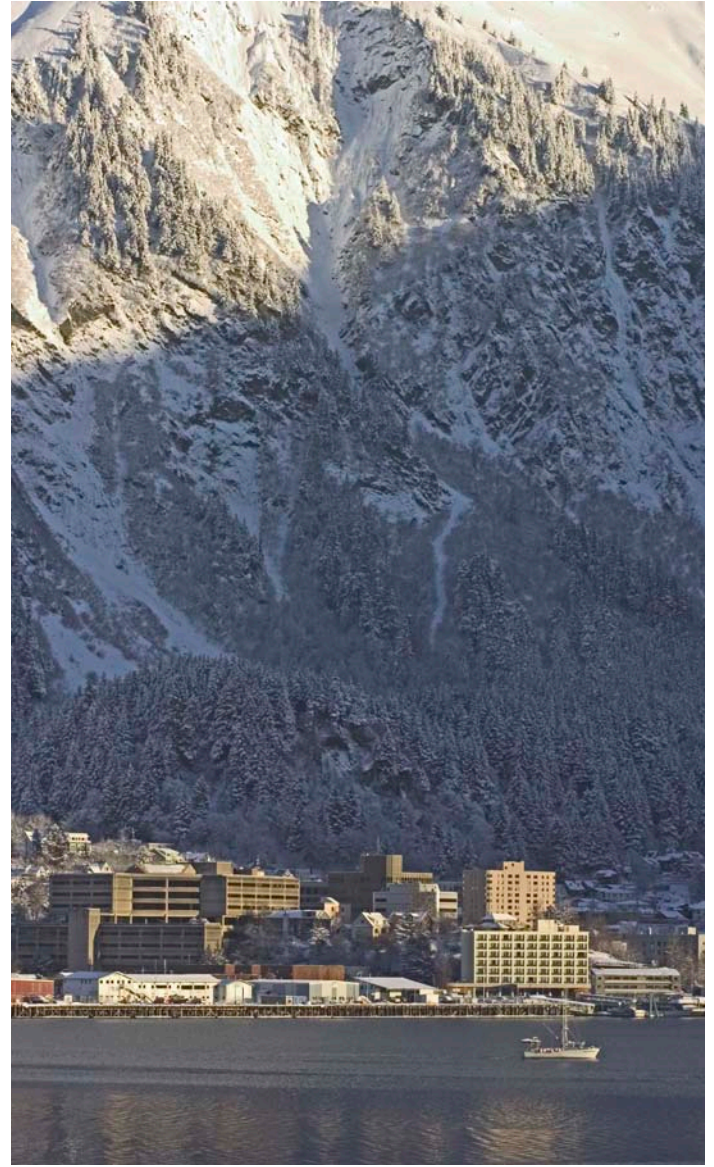
In Juneau, the overall costs are approximately 30 percent higher than the U.S. average. However, there are some bright spots. The personal tax burden in Alaska is extremely low. Senior citizens enjoy a \$150,000 property tax exemption or a renter's rebate. Also, every resident receives an annual Permanent Fund distribution, which in 2009 amounted to \$1,305.

TAXES IN JUNEAU: AN OVERVIEW	
TYPE OF TAX	RATE
Local Sales Tax	5%
Local Hotel Room Tax	7%
Local Alcohol Tax	3%
Local Property Tax Mill Rate	10.6
State Income Tax	None
State Sales Tax	None
Local Income Tax	None

JUNEAU EMPLOYMENT BY INDUSTRY, 2008			
	AVERAGE ANNUAL EMPLOYMENT	TOTAL PAYROLL (\$ IN THOUSANDS)	AVERAGE ANNUAL WAGE
Private Sector	10,874	\$389,245	\$35,796
Natural Resource & Mining	476	\$40,894	\$85,837
Construction	882	\$53,395	\$60,527
Manufacturing	280	\$9,098	\$32,511
Trade, Transportation, & Utilities	3,620	\$111,582	\$30,827
Information	280	\$12,867	\$45,995
Financial Activities	635	\$30,046	\$47,285
Professional Business Services	840	\$31,413	\$37,407
Educational & Health Services	1,660	\$56,648	\$34,135
Leisure & Hospitality	1,610	\$26,605	\$16,521
Other Services	591	\$16,698	\$28,254
Government	7,254	\$365,806	\$50,428
Federal Government	837	\$66,886	\$79,935
State Government	4,211	\$204,514	\$48,571
Local Government	2,206	\$94,406	\$42,797
Total Employment	18,127	\$755,051	\$41,653



Photo Credit: Michael Penn/
Juneau Empire



Juneau Schools and Education

K-12

Opportunities for education and enrichment abound in Juneau for adults and youth alike. Juneau's public school system consistently ranks higher than the State average on benchmark and high school qualifying exam scores. There are seven elementary schools, two middle schools, and two high schools in the Juneau School District. Elementary schools range in size from 70 students at the Juneau Community Charter School to approximately 420 students at Harborview Elementary School. In addition to traditional single-grade classes, several schools offer a multi-age classroom option. Juneau also offers support to home school families in the Juneau area for grades K-12. For high school, Juneau students can choose to attend the brand new Thunder Mountain High School or the Juneau-Douglas High School.

University

The campus of the University of Alaska Southeast (UAS) is 12 miles from downtown Juneau. UAS features both academic and vocational courses, offers degrees in over thirty fields and concentrations, and is comprised of schools of Arts and Sciences, Business and Management, Education, and Career Education. UAS students can cruise the waters of Glacier Bay National Park

for archaeological research, hop into a helicopter to document the glacial flow of the Juneau Icefield, scuba dive to study king crab, study ceramics or painting on the shores of a mountain lake, be part of a unique "literature and the environment" program, or become involved in productions with a world-class regional theater company. At the graduate level, UAS offers Masters degrees in business administration, public administration, teaching, and educational leadership. UAS also provides career development degrees, occupational endorsements, and certificates in outdoor studies, business, health care, construction, diesel, marine, automotive, fisheries, welding, or mining technology.

Additional Enrichment Opportunities

The Juneau School District and UAS are supported by a variety of community education organizations, and the school district's school-day activities are supplemented by classes offered through Juneau Community Schools. For example, SERRC—Alaska's educational resource center—provides direct student services, school and district support services, and community services (including adult education) to students of all ages.

Juneau Health Care Services

Juneau has a number of quality health care providers and services. The Bartlett Regional Hospital is Juneau's largest health care provider and offers a full range of medical services. The hospital has a staff of 430 employees and 55 inpatient beds. In 2008, Bartlett treated 45,300 outpatients, admitted 2,800 patients for treatment, delivered 372 babies, and performed 3,700 surgeries.

The next largest health care provider in Juneau is the Southeast Alaska Regional Health Consortium (SEARHC). SEARHC is a non-profit tribal health consortium that provides health and wellness services to Natives and their families. SEARHC has a Juneau staff of nearly 200 employees, and a regional staff of nearly 800 in 18 communities around Southeast Alaska. The

SEARHC Ethel Lund Medical Center in Juneau is one of Alaska's largest walk-in health care centers and is nationally accredited.

In addition, Juneau has 20 dentist offices, 19 physician offices, and 20 other doctor's offices, such as optometrists and chiropractors. Juneau has a public health center, a family birth center, and several nursing and residential care options. Ambulance and EMS service are provided by Capital City Fire and Rescue. Juneau has volunteer search and rescue organizations such as Juneau Mountain Rescue and SEADOGS. Also, the Juneau based U.S. Coast Guard 17th District is responsible for performing search and rescue in the waters around Alaska.

Quality of Life and Juneau's Recreational Opportunities

The residents of Juneau, Alaska enjoy an extremely high quality of life. When asked why they live in Juneau, nearly all locals surveyed in 2006 named quality of life as an important or very important factor in their decision to live here, with one in five naming quality of life as the most important reason they live in Juneau. The average commute to work is less than 15 minutes, and 10 percent of Juneau residents walk to work.

Situated in the Tongass National Forest, the City and Borough of Juneau stretches along the shores of Alaska's Inside Passage and is home to spectacular glaciers, rugged mountains, and countless islands, waterfalls, and wildlife. For this reason, Juneau residents enjoy unique access to outdoor recreational opportunities. Juneau has 50 major trails for hiking, and the Eaglecrest Ski Area has 31 alpine runs and 8 km of Nordic trails. Other outdoor recreation options for Juneau residents include kayaking, boating, hunting, rock climbing, ice climbing, zip lining, hang gliding, river rafting, camping, wildlife viewing, scuba diving, and fishing.

Juneau was recently named the fifth-best city in which to raise an outdoor kid by *Backpacker* magazine and the sixth-best "outdoorsy" place to retire by *U.S. News and World Report*.

Juneau is also culturally rich. *Celebration* is one of the largest Native Alaskan cultural events in the state, drawing more than 6,000 people to Juneau biennially. The community hosts many other regional and state festivals, from the Alaska Folk Festival, which showcases around 450 musicians in an annual series of free performances, concerts and events, to the annual Gold Rush Days with mining and logging competitions.

According to a recent New York Times article profiling the community, "Residents of Juneau brag that their town is the most beautiful capital city in America, and they have a strong argument... but there's more to the town's appeal than natural beauty. Gold Rush-era buildings, art galleries, quality regional theater and fresh seafood make for pleasant companions to Juneau's stunning surroundings."



**Juneau Economic
Development Council**
612 W. Willoughby Ave.
Juneau, AK 99801
Phone: 907-523-2300
www.jedc.org

If Juneau were a type of music, we'd say it's part funk, part soul, part bluegrass, and a whole lot of classic rock. Here, you'll find an unexpected mix of fishermen and teachers, legislators and artists, lawyers and homemakers, dock workers and frontier entrepreneurs, students and Native elders. Somehow we make it all work.

Juneau Convention & Visitors Bureau

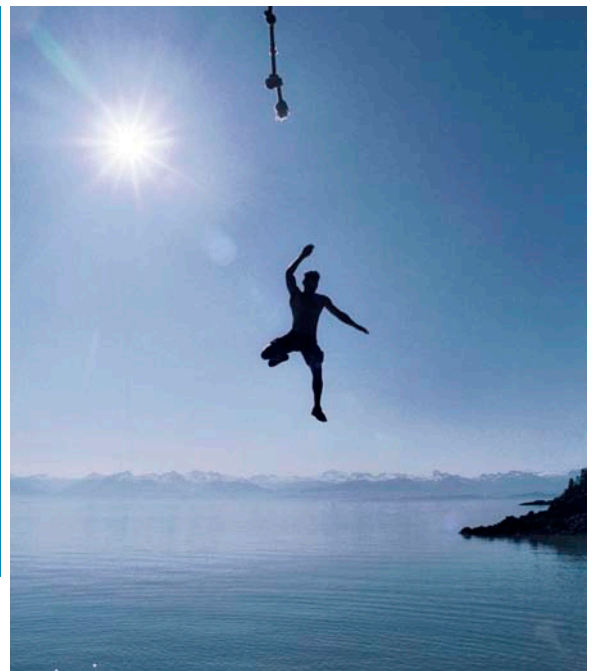


Photo Credit: Michael Penn/Juneau Empire